

**ARTERY™**

**User Manual**

**49er Tank**



Thank you for purchasing this genuine product from Artery Vapor!

Please read this user manual carefully before using the 49er Tank.

Please follow the step-by-step instructions to get started!

# Configuration

Contents of kit:

- \* 1 Glass Tank
- \* 1 Extra APC Coil
- \* 1 User Manual

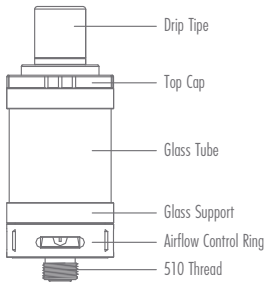


**ARTERY™**

**User Manual**

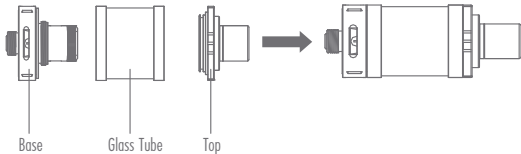
**49er Tank**

## Specifications



## I . How to Install

1. Screw the atomizer coil into base clockwise.
2. Screw the base onto the atomizer tube counterclockwise.
3. Screw the top cap on the atomizer tube.
4. Plug the drip tip into top cap.

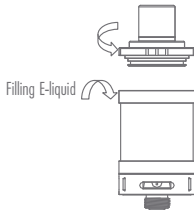


## II. How to Fill E-liquid

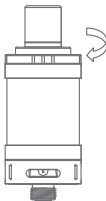
Step 1: Turn the glass tube counterclockwise until it stops.



Step 2: Turn the top cap counterclockwise to fill the e-liquid into tank.



Step 3: After filling the tank, turn the top cap clockwise. (The height of e-liquid should not exceed the tank.)

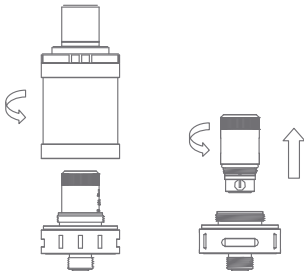


Note: Turn the glass tube clockwise until it stops to open the e-liquid inhale hole. Waiting for 2 to 3 minutes, e-liquid will be inhaled by the atomizer totally.



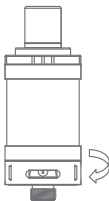
### III. How to Replace Atomizer Coil

1. Unscrew the base of atomizer clockwise.
2. Screw the new atomizer coil into the base. It's replaced.



## IV. How to Adjust the Airflow

You can adjust the airflow ring clockwise or counterclockwise to control the airflow valve. Rotate the airflow ring counterclockwise until it stops to close the hole. Rotate airflow control ring clockwise until it stops to get maximum air flow.





[www.arteryvapor.com](http://www.arteryvapor.com)

All rights reserved by **ARTERY**

Designed & Manufactured by **ARTERY**

---



**MADE IN  
CHINA**